



ENVIROLUX
ENERGY SYSTEMS

www.envirolux.com sales@envirolux.com 800-914-8779

CATALOG# : _____

PROJECT : _____

TYPE : _____

Series MAX/RDX

Choice of Round or Square Profile

Low Profile LED Strip

Full body micro-silhouette makes a bold statement with a minimal design in a variety of standard powder coated finish options, as well as custom colors. Scaled to the LED module, the drop frosted diffuser surrounds the LEDs for soft lighting. MAX/RDX fixture can be surface mounted on wall or ceiling or pendant mounted with specially engineering cable mounting kit. MAX/RDX fixtures can be used individually or in a continuous run, either surface, wall, or pendant mounted. Ideal for retail applications.

CONSTRUCTION

Housing is die-formed and embossed 22 gauge steel, chemically treated to both resist corrosion and also to enhance paint adhesion.

MOUNTING

Pendant mount or surface mount (horizontal or vertical).

TYPICAL OPTIONS & ACCESSORIES

See page 2 for multiple sensor options, finish options and emergency battery backup choices available.

MAX

RDX

DIMENSIONS

2"W Housing

24"L x 2"W x 2.972"H

48"L x 2"W x 2.972"H

72"L x 2"W x 2.972"H

96"L x 2"W x 2.972"H

3"W Housing

24"L x 3"W x 3.375"H

48"L x 3"W x 3.375"H

72"L x 3"W x 3.375"H

96"L x 3"W x 3.375"H

FEATURES & BENEFITS

- For individual use or in continuous runs through use of joining brackets
- Variety of lumen packages/wattages through use of programmable drivers
- Multiple color temperatures available (3000K, 3500K, 4000K and 5000K)
- Available with smooth frosted lens
- Multiple powder coat finish colors available
- Suitable for dry and damp locations
- Emergency battery backup available
- >50,000 hrs of L70 LED life
- CRI >80
- 0-10 Volts dimmable 120-277V
- Power factor > 0.90
- 5 year warranty



CATALOG# : _____
 PROJECT : _____
 TYPE : _____

Series MAX/RDX

Low Profile LED Strip

ORDER INFORMATION

Factory at your fingertips. Fill in the blanks to create your part number or create a custom configuration.

SENSOR ¹	SERIES ⁶		LENS		LENGTH		WATTAGE & LUMENS ²		DRIVER		CCT ³			
SD Daylight Sensor	MAX2	2" Wide Square Housing	FR	Frosted Lens	24L	24"	Q14W	14 Watts 2000 Lumens	DMV	120-277VAC 0-10V Dimming	30K	3000K		
							Q24W	24 Watts 3500 Lumens					35K	3500K
SS Occupancy Sensor	RDX2	2" Wide Round Housing	FR	Frosted Lens	48L	48"	Q28W	28 Watts 4000 Lumens	DHV	347-480VAC 0-10V Dimming	40K	4000K		
							Q48W	48 Watts 7000 Lumens					50K	5000K
					72L	72"	Q42W	42 Watts 6200 Lumens						
Blank No Sensor	MAX3	3" Wide Square Housing	FR	Frosted Lens	24L	24"	Q20W	20 Watts 3250 Lumens						
							B38W	38 Watts 5500 Lumens						
		RDX3			3" Wide Round Housing	48L	48"	Q40W	40 Watts 6500 Lumens					
								B75W	75 Watts 11000 Lumens					
		72L	72"	Q60W	60 Watts 9700 Lumens									
		96L	96"	Q80W	80 Watts 11000 Lumens									
				B150W	150 Watts 22000 Lumens									

FINISH ⁴		CONFIGURATION		FLAIR ⁵		EMERGENCY OPTIONS		OPTIONS/ACCESSORIES	
WH	White	Blank	Individual	Blank	White	EM14	14W Emergency backup (Remote mount only for fixtures 3ft and shorter; integrated in MAX3/RDX3 4ft and longer)	GT310	Cable kit with (2) 10' aircraft cable
BK	Black	-B	Beginner run	BK	Black			GT315	Cable kit with (2) 15' aircraft cable
SL	Silver	-E	Ender run	SL	Silver			C15WH	15' 3 wires 18-gauge power cord
BL	Blue	-J	Joiner	BL	Blue			C515WH	15' 5 wires 18-gauge power cord
RD	Red			RD	Red			HC3015WWH	4ft White Canopy Kit with 5 Wire Cord
								HC3016WWH	4ft White Canopy Kit with 6 Wire Cord
								HC3025WWH	12ft White Canopy Kit with 5 Wire Cord
								HC3026WWH	12ft White Canopy Kit with 6 Wire Cord

Note:

- Sensors are not integrated and add approx. 3 inches to overall fixture length. Adding a sensor to an existing fixture requires rewiring.
- Minimum fixture wattage of 10W. Minimum 5W per fixture foot, maximum 20.5W per fixture foot. Programmable LED drivers allow custom configured wattages and corresponding lumens. Power feed cable is 18 AWG, a power drop will be required every 48 feet of fixture length OR every 800W, whichever comes first.
- Consult factory for 90CRI and 5000K availability.
- Finish refers to the color of the driver cover portion of the fixture body.
- Flair refers to the end caps and middle stripe of the fixture body. Choose a standard flair color for your fixture from the guide on the following page.
- RDX is approximately 5% higher lumen output than MAX.

We reserve the right to change design, materials, LEDs and finish in any way that will not alter installed appearance or reduce function and performance.

CATALOG# : _____
PROJECT : _____
TYPE : _____

Series MAX/RDX

Low Profile LED Strip

STANDARD FLAIR COLORS AND FINISHES



Gloss Black
(GB)



Matte Black
(BK)



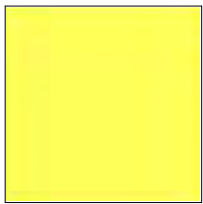
Matte Silver
(SL)



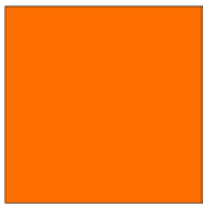
Statuary Bronze
(BZ)



Glimmer (Iron)
(IR)



Safety Yellow
(YL)



Safety Orange
(OR)



Red
(RD)



Fire Engine Red
(FR)



Blue
(BL)

NOTE: Factory offers any Tiger Drylac RAL finish, contact Saylite for more information. Consult factory to special order custom 'real wood' finishes.

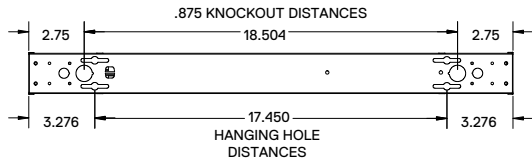
CATALOG# : _____
 PROJECT : _____
 TYPE : _____

Series MAX/RDX

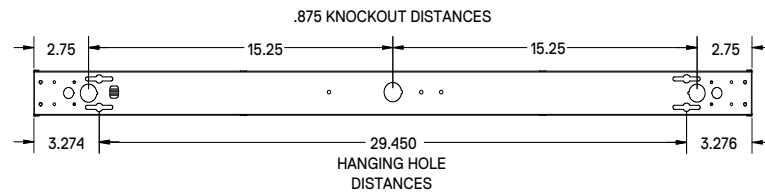
Low Profile LED Strip

DRAWINGS & IMAGES

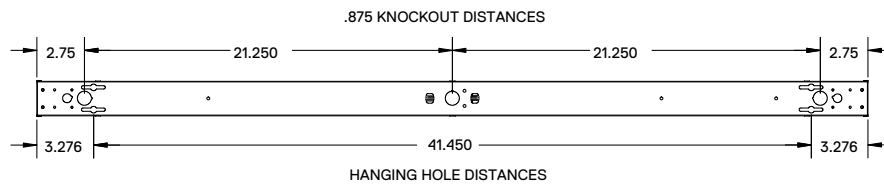
MAX2FR24L / RDX2FR24L



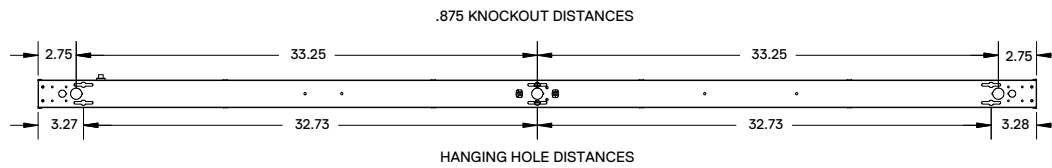
MAX2FR36L / RDX2FR36L



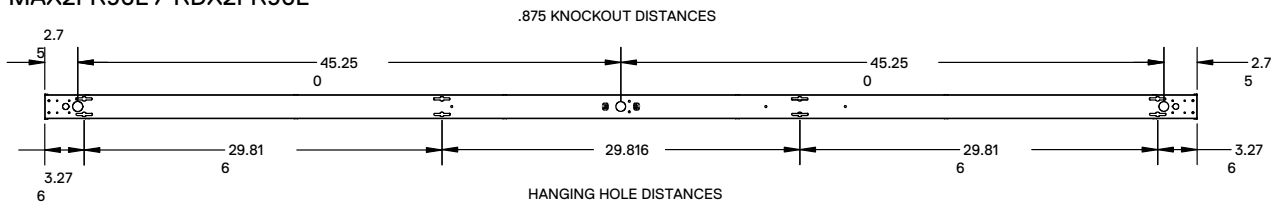
MAX2FR48L / RDX2FR48L



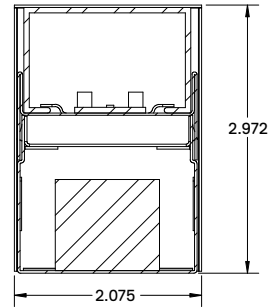
MAX2FR72L / RDX2FR72L



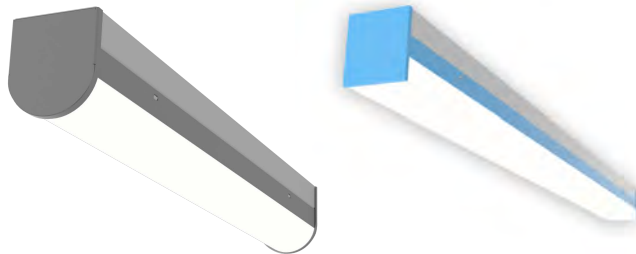
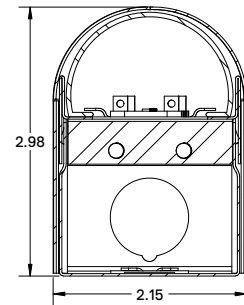
MAX2FR96L / RDX2FR96L



Square Lens Profile



Round Lens Profile



Consult factory for different finish

Replacement Lens Ordering Information

SERIES	DESCRIPTIONS
OMAX2FR24L	Replacement frosted lens for 24"L x 2.075"W
OMAX2FR48L	Replacement frosted lens for 48"L x 2.075"W
OMAX2FR96L	Replacement frosted lens for 96"L x 2.075"W
OMAX3FR24L	Replacement frosted lens for 24"L x 3.075"W
OMAX3FR48L	Replacement frosted lens for 48"L x 3.075"W
OMAX3FR96L	Replacement frosted lens for 96"L x 3.075"W

Note: ⁶ Change MAX to RDX for RDX replacement lens model numbers

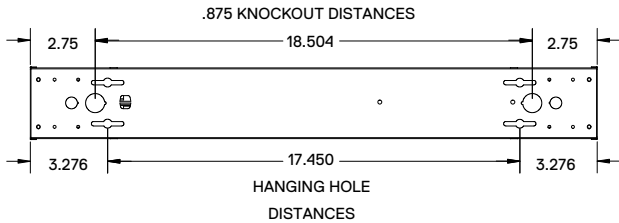
CATALOG# : _____
 PROJECT : _____
 TYPE : _____

Series MAX/RDX

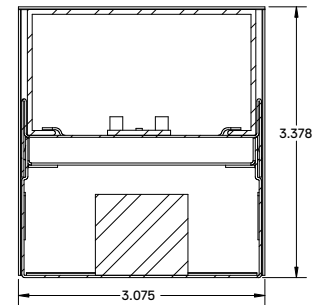
Low Profile LED Strip

DRAWINGS & IMAGES

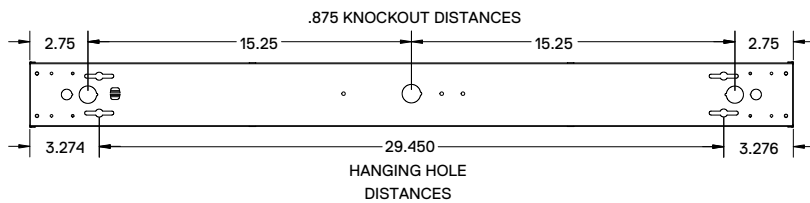
MAX3FR24L / RDX3FR24L



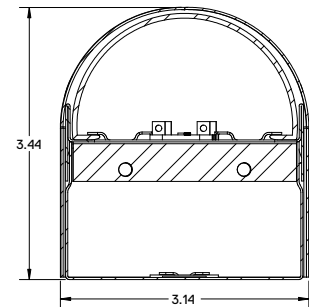
Square Lens Profile



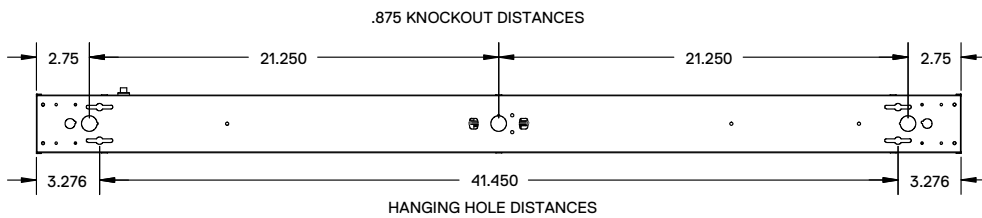
MAX3FR36L / RDX3FR36L



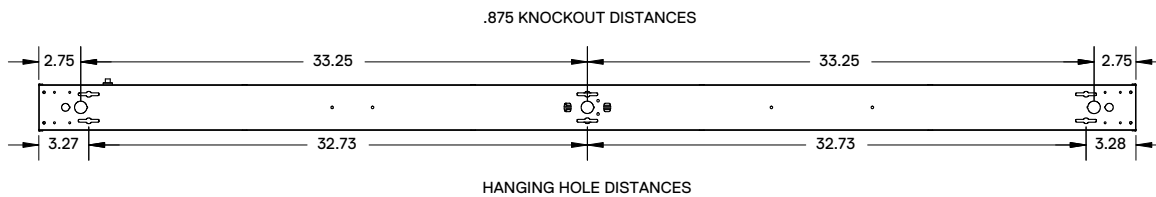
Round Lens Profile



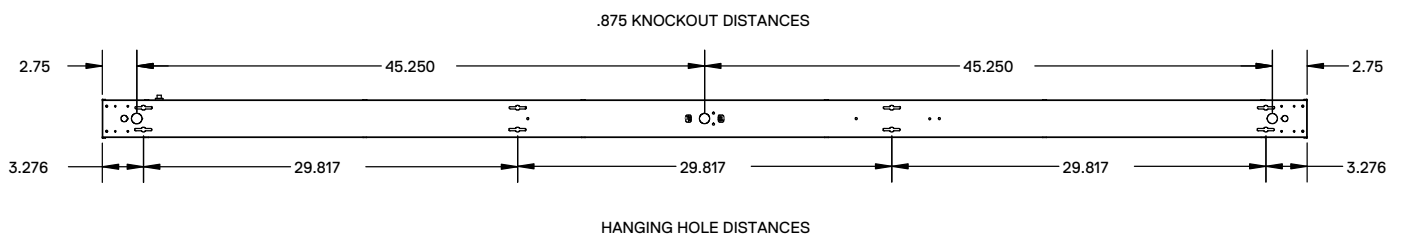
MAX3FR48L / RDX3FR48L



MAX3FR72L / RDX3FR72L



MAX3FR96L / RDX3FR96L



CATALOG# : _____
PROJECT : _____
TYPE : _____

Series MAX/RDX

Low Profile LED Strip

DLC LISTED



ITEM NUMBER - MAX2

[XX]MAX2FR48LQ28WDMV30KWH[Y][ZZZ]
[XX]MAX2FR48LQ28WDMV35KWH[Y][ZZZ]
[XX]MAX2FR48LQ28WDMV40KWH[Y][ZZZ]
[XX]MAX2FR48LQ28WDMV50KWH[Y][ZZZ]
[XX]MAX2FR48LQ48WDMV30KWH[Y][ZZZ]
[XX]MAX2FR48LQ48WDMV35KWH[Y][ZZZ]
[XX]MAX2FR48LQ48WDMV40KWH[Y][ZZZ]
[XX]MAX2FR48LQ48WDMV50KWH[Y][ZZZ]
[XX]MAX2FR96LQ56WDMV30KWH[Y][ZZZ]
[XX]MAX2FR96LQ56WDMV35KWH[Y][ZZZ]
[XX]MAX2FR96LQ56WDMV40KWH[Y][ZZZ]
[XX]MAX2FR96LQ56WDMV50KWH[Y][ZZZ]
[XX]MAX2FR96LQ96WDMV30KWH[Y][ZZZ]
[XX]MAX2FR96LQ96WDMV35KWH[Y][ZZZ]
[XX]MAX2FR96LQ96WDMV40KWH[Y][ZZZ]
[XX]MAX2FR96LQ96WDMV50KWH[Y][ZZZ]

ITEM NUMBER - RDX2

[XX]RDX2FR48LQ28WDMV30KWH[Y][ZZZ]
[XX]RDX2FR48LQ28WDMV35KWH[Y][ZZZ]
[XX]RDX2FR48LQ28WDMV40KWH[Y][ZZZ]
[XX]RDX2FR48LQ28WDMV50KWH[Y][ZZZ]
[XX]RDX2FR48LQ48WDMV30KWH[Y][ZZZ]
[XX]RDX2FR48LQ48WDMV35KWH[Y][ZZZ]
[XX]RDX2FR48LQ48WDMV40KWH[Y][ZZZ]
[XX]RDX2FR48LQ48WDMV50KWH[Y][ZZZ]
[XX]RDX2FR96LQ56WDMV30KWH[Y][ZZZ]
[XX]RDX2FR96LQ56WDMV35KWH[Y][ZZZ]
[XX]RDX2FR96LQ56WDMV40KWH[Y][ZZZ]
[XX]RDX2FR96LQ56WDMV50KWH[Y][ZZZ]
[XX]RDX2FR96LQ96WDMV30KWH[Y][ZZZ]
[XX]RDX2FR96LQ96WDMV35KWH[Y][ZZZ]
[XX]RDX2FR96LQ96WDMV40KWH[Y][ZZZ]
[XX]RDX2FR96LQ96WDMV50KWH[Y][ZZZ]

ITEM NUMBER - MAX3

[XX]MAX3FR48LQ40WDMV30KWH[Y][ZZZ]
[XX]MAX3FR48LQ40WDMV35KWH[Y][ZZZ]
[XX]MAX3FR48LQ40WDMV40KWH[Y][ZZZ]
[XX]MAX3FR48LQ40WDMV50KWH[Y][ZZZ]
[XX]MAX3FR48LB75WDMV30KWH[Y][ZZZ]
[XX]MAX3FR48LB75WDMV35KWH[Y][ZZZ]
[XX]MAX3FR48LB75WDMV40KWH[Y][ZZZ]
[XX]MAX3FR48LB75WDMV50KWH[Y][ZZZ]
[XX]MAX3FR96LQ80WDMV30KWH[Y][ZZZ]
[XX]MAX3FR96LQ80WDMV35KWH[Y][ZZZ]
[XX]MAX3FR96LQ80WDMV40KWH[Y][ZZZ]
[XX]MAX3FR96LQ80WDMV50KWH[Y][ZZZ]
[XX]MAX3FR96LB150WDMV30KWH[Y][ZZZ]
[XX]MAX3FR96LB150WDMV35KWH[Y][ZZZ]
[XX]MAX3FR96LB150WDMV40KWH[Y][ZZZ]
[XX]MAX3FR96LB150WDMV50KWH[Y][ZZZ]
[XX]MAX3FR48LQ40WDHV30KWH[Y][ZZZ]
[XX]MAX3FR48LQ40WDHV35KWH[Y][ZZZ]
[XX]MAX3FR48LQ40WDHV40KWH[Y][ZZZ]
[XX]MAX3FR48LQ40WDHV50KWH[Y][ZZZ]
[XX]MAX3FR48LB75WDHV30KWH[Y][ZZZ]
[XX]MAX3FR48LB75WDHV35KWH[Y][ZZZ]
[XX]MAX3FR48LB75WDHV40KWH[Y][ZZZ]
[XX]MAX3FR48LB75WDHV50KWH[Y][ZZZ]
[XX]MAX3FR96LQ80WDHV30KWH[Y][ZZZ]
[XX]MAX3FR96LQ80WDHV35KWH[Y][ZZZ]
[XX]MAX3FR96LQ80WDHV40KWH[Y][ZZZ]
[XX]MAX3FR96LQ80WDHV50KWH[Y][ZZZ]
[XX]MAX3FR96LB150WDHV30KWH[Y][ZZZ]
[XX]MAX3FR96LB150WDHV35KWH[Y][ZZZ]
[XX]MAX3FR96LB150WDHV40KWH[Y][ZZZ]
[XX]MAX3FR96LB150WDHV50KWH[Y][ZZZ]

ITEM NUMBER - RDX3

[XX]RDX3FR48LQ40WDMV30KWH[Y][ZZZ]
[XX]RDX3FR48LQ40WDMV35KWH[Y][ZZZ]
[XX]RDX3FR48LQ40WDMV40KWH[Y][ZZZ]
[XX]RDX3FR48LQ40WDMV50KWH[Y][ZZZ]
[XX]RDX3FR48LB75WDMV30KWH[Y][ZZZ]
[XX]RDX3FR48LB75WDMV35KWH[Y][ZZZ]
[XX]RDX3FR48LB75WDMV40KWH[Y][ZZZ]
[XX]RDX3FR48LB75WDMV50KWH[Y][ZZZ]
[XX]RDX3FR96LQ80WDMV30KWH[Y][ZZZ]
[XX]RDX3FR96LQ80WDMV35KWH[Y][ZZZ]
[XX]RDX3FR96LQ80WDMV40KWH[Y][ZZZ]
[XX]RDX3FR96LQ80WDMV50KWH[Y][ZZZ]
[XX]RDX3FR96LB150WDMV30KWH[Y][ZZZ]
[XX]RDX3FR96LB150WDMV35KWH[Y][ZZZ]
[XX]RDX3FR96LB150WDMV40KWH[Y][ZZZ]
[XX]RDX3FR96LB150WDMV50KWH[Y][ZZZ]
[XX]RDX3FR48LQ40WDHV30KWH[Y][ZZZ]
[XX]RDX3FR48LQ40WDHV35KWH[Y][ZZZ]
[XX]RDX3FR48LQ40WDHV40KWH[Y][ZZZ]
[XX]RDX3FR48LQ40WDHV50KWH[Y][ZZZ]
[XX]RDX3FR96LQ80WDHV30KWH[Y][ZZZ]
[XX]RDX3FR96LQ80WDHV35KWH[Y][ZZZ]
[XX]RDX3FR96LQ80WDHV40KWH[Y][ZZZ]
[XX]RDX3FR96LQ80WDHV50KWH[Y][ZZZ]
[XX]RDX3FR96LB150WDHV30KWH[Y][ZZZ]
[XX]RDX3FR96LB150WDHV35KWH[Y][ZZZ]
[XX]RDX3FR96LB150WDHV40KWH[Y][ZZZ]
[XX]RDX3FR96LB150WDHV50KWH[Y][ZZZ]