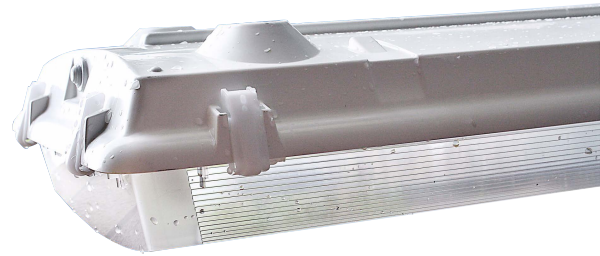


EnviroLux Led High Lumen 50 Watt Industrial linear Vaportight



Project Information	
Project Name:	Fixture Type:
Complete Catalog #:	Date:
Comments:	



The EnviroLux LED Easy Hang Industrial Food Grade Vaportight LED Fixture product line is available in several wattages with a wide choice of mounting configurations and optical distributions designed to replace HID lighting systems from 150w to 400w MH or HPS. Typical commercial applications include food processing plants, Mining tunnels, commercial warehouse facilities, and manufacturing facilities where our up to 201 Lumens per watt and a high CRI of 80 efficiency, help factory workers best disseminate their production equipment and surroundings for safety. Fixture wattages for mounting heights of up to 35 feet are available.

Specifications and Features:

Housing:

Designed for ease of installation and maintenance. Poured in place gasket seal the enclosures from the most hostile of environments. Economical mounting system can provide dramatic savings in installation labor. Very tough diffusers resist breakage and reduce replacement and maintenance costs. Patented frosted lens for reducing direct glare and hot spot images of the LEDs. Durable stainless steel mounting hardware. No need to drill through the housing for installation, so installation time is dramatically reduced, lowering costs. Optional stainless steel bail for chain/cable hung installations.

Listing & Ratings:

CSA: Listed for Dry Locations, ANSI/UL 1598, 8750; IP54

Finish:

Powdercoat Finish Over Aluminum Housing.

Mounting Options:

Mount with Included V-Hangers. Includes a 3' 3-Wire Cord with Leads.

LED:

Aluminum Metal Core - 2oz Copper Inlay

Wattage:
50 Watt



Driver:

Electronic Driver, 120-277V, 50/60Hz; Less Than 20% THD and PF>0.90. Standard Internal Surge Protection 6kV. 0-10V Dimming Standard for a Dimming Range of 100% to 10%; Dimming Source Current is 150 Microamps.

Controls:

Fixtures Ordered with Factory-Installed Photocell or Motion Sensor Controls are Internally Wired for Switching and/or 1-10V Dimming Within the Housing. Remote Direct Wired Interface of 1-10V Dimming is Not Implied and May Not Be Available, Please Consult Factory. Fixtures are Tested with EnviroLux Controls and May Not Function Properly With Controls Supplied By Others. Fixtures are NOT Designed for Use with Line Voltage Dimmers.

Warranty:

7-Year Warranty for -40°C to +50°C Environment.

See Page 2 for Projected Lumen Maintenance Table

Dimensions		Widths
Height	5.72"	50W 6.75"
Length	51.81"	



- 316 Stainless Steel: **EES-MB**
- Easy Snap on Installation
- Optional mounting systems:
 - Direct to Ceiling
 - Bail for Chain
 - Drilled for Threaded Rod Pendant

Complete Units
Ordering Information
Example: EES-VT-50W-UNV-PS-XXXX

EnviroLux Led High Lumen 50 Watt Industrial linear Vaportight

		U	5K	P	
Model	Wattage	Driver	CCT	Color	Options
EES-VT=Linear LED Vaportight	50=□	UNV-PS=120-277V	3K=3000K 4K=4100K 5K=5000K	W=White	

SF=Single Fuse*
DF=Double Fuse*
SP=Surge Protection
M3=Microwave Sensor for Mounting Heights of 20 Feet or Above.*
CP6120W=6' White Cord, 3 Wire, L5-15P Twist-Lock Plug
CP6277W=6' White Cord, 3 Wire, L7-15P Twist-Lock Plug
C6600B=6' Black Cord, STW, 600VAC, 3 Wire, Leads
C6600W=6' White Cord, STW, 600VAC, 3 Wire, Leads
C4600B=4' Black Cord, SE00W, 600VAC, 3 Wire, Leads
BU=Battery Backup, 90 Minutes*
EW=EnviroLux Wireless
GR=Gripple (Pair 10ft)

*120-277V Models Only.



NEMA 4X

IP65

IP66

RoHS



Scan to watch our Made in USA video



Photometric Performance

LED Watts	Drive Current (mA)	Input Watts	Optics	Spacing Criteria	5000 CCT 80 CRI	
					Lumens	LPW
LED 50w	500	50	Wide (100°)	1.16	9,044	201

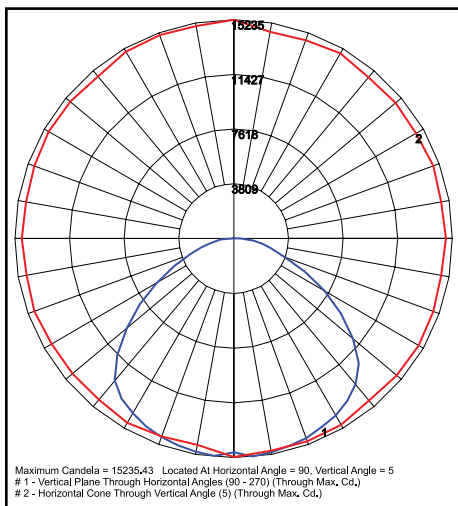
Lumen Maintenance

Data shown for 5000 CCT		Compare to MH				
TM-21-11	Input Watts	Initial	25,000 Hrs	50,000 Hrs	100,000 Hrs	Calculated LED Life
L70 Lumen Maintenance @ 25°C / 77°F	All wattages up to and including 180w	1.00	0.89	0.79	0.58	165,000
L70 Lumen Maintenance @ 50°C / 122°F		1.00	0.86	0.72	0.44	96,000
L80 Lumen Maintenance @ 40°C / 104°F		1.00	0.87	0.74	0.47	74,000

NOTES:

- Projected per IESNA TM-21-11. Data references the extrapolated performance projections for the 525mA base model in a 25°C ambient, based on 10,000 hours of LED testing per IESNA LM-80-08.
- Compare to MH box indicates suggested Light Loss Factor (LLF) to be used when comparing to Metal Halide (MH) systems.

Photometric Data



A
A

A
A