

EnviroLux VALUE SERIES:

A new addition to the EnviroLux Family. The Value Series a has the look and feel of the traditional Citadel Narrow 4', but with a cost advantage of being a polycarbonate housing, simplified latching clips and economical mounting brackets.

FEATURES & BENEFITS:

Housing

- 5VA (f1) Polycarbonate Gasketed Housing
- UL approved for through wiring
- UL f1 rated (suitable for outdoor use exposure to ultraviolet light)
- Meets UL 746 (suitable for exposure and immersion of water)

Board trays

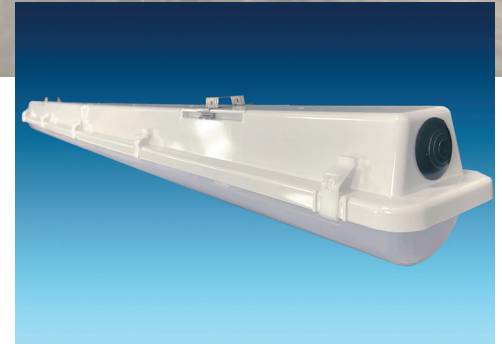
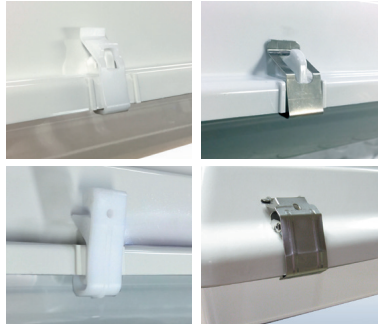
- LED boards are attached to a one piece white steel tray
- Tray securely snaps into stainless steel retainer clips, which are installed in housing
- Integral hanger hook allows suspension of the tray during maintenance & installation
- Nylon safety straps attach the tray and retainer clips for safety and easy maintenance
- Drivers mounted directly to the backside of the housing

Gasket

- "Poured in place", closed cell polyurethane
- Compression recovery of 95-99%
- Will not support fungal growth

Clips and Latches

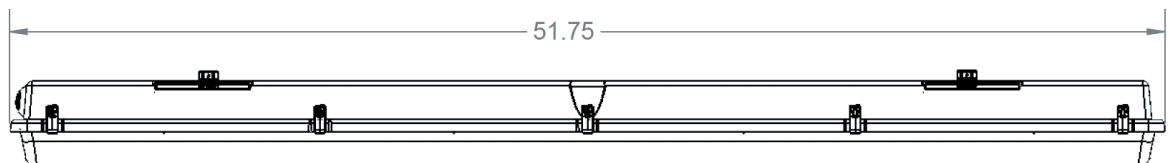
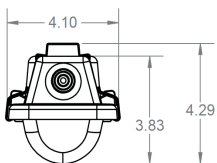
- Quick easy 1 Piece snap on installation
- 3-Piece Latch Options available
- CAPTIVE Latches, affixed to the housing therefore will not fall off
- Both Available in
 - White POM
 - Marine Grade 316-Stainless Steel



CERTIFICATIONS:



Model	Part Suffix	Driver	Wattage	CCT	Lens	Mounting	Options
EES-CT2	VSVT-LED-PS	UNV=120-277V	53W	AMBER 3000K 3500K 4000K 5000K	FR=Frosted CL=Clear	EH=Easy Hang PSP=Pendant Single Point PDP=Pendant Double Point	OS=OCC Sensor GR=Gripple (6 Feet)



EnviroLux VALUE SERIES - NARROW 4'

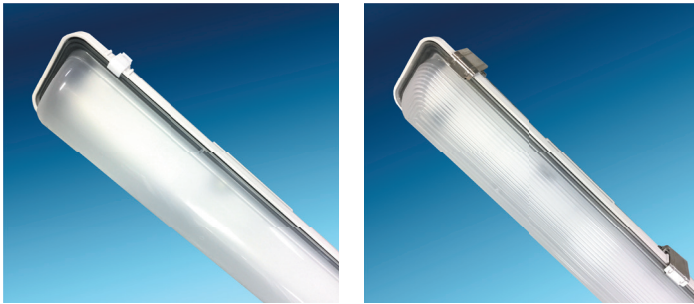
ACCESSORIES & OPTIONS:

Optics

- All EnviroLux lenses are injection molded and have the Guardian Seal feature
- Available in either Clear or FR50 Frost
 - Acrylic
 - 100% impact modified (similar to DR), non-yellowing
 - Best in areas with UV exposure
 - Clear transmission 93%
 - Frosted transmission 88%
 - Polycarbonate
 - UV stabilized
 - Best in extreme temperature and high abuse conditions (freezers/ foundries)
 - Clear transmission 89%
 - Frost transmission 75%

Two styles of lenses

- Smooth (low profile)
 - Best shallow lens for LED boards and overall light distribution
- Lineal Ribbed (low profile)
 - Best for obscuring the image of fluorescent or LED lamps



Installation:

- Fixture can be mounted in various ways direct to the ceiling, pendant (single or dual point) or by Grippler® cable or chain using the Bail Option.

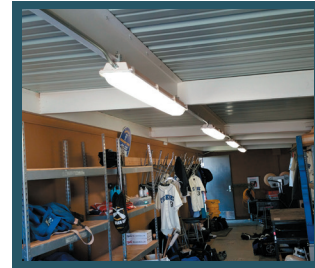


Bail

APPLICATIONS:



STAIRWELLS



STORAGE ROOMS



UNDER AWNINGS



OPEN BAYS



GARDEN CENTERS



ENVIROLUX
ENERGY SYSTEMS