

EnviroLux Led High Lumen 149 Watt Industrial linear Vaportight



Project Information	
Project Name:	Fixture Type:
Complete Catalog #:	Date:
Comments:	

The EnviroLux LED Easy Hang Industrial Food Grade Vaportight LED Fixture product line is available in several wattages with a wide choice of mounting configurations and optical distributions designed to replace HID lighting systems from 250w to 1000w MH or HPS. Typical commercial applications include food processing plants, Mining tunnels, commercial warehouse facilities, and manufacturing facilities where our up to 201 Lumens per watt and a high CRI of 80 efficiency, help factory workers best disseminate their production equipment and surroundings for safety. Fixture wattages for mounting heights of up to 35 feet are available.

Specifications and Features:

Housing:

Designed for ease of installation and maintenance. Poured in place gasket seal the enclosures from the most hostile of environments. Economical mounting system can provide dramatic savings in installation labor. Very tough diffusers resist breakage and reduce replacement and maintenance costs. Patented frosted lens for reducing direct glare and hot spot images of the LEDs. Durable stainless steel mounting hardware. No need to drill through the housing for installation, so installation time is dramatically reduced, lowering costs. Optional stainless steel bail for chain/cable hung installations.

Listing & Ratings:

CSA: Listed for Dry Locations, ANSI/UL 1598, 8750; IP54

Finish:

Powdercoat Finish Over Aluminum Housing.

Mounting Options:

Mount with Included V-Hangers. Includes a 3' 3-Wire Cord with Leads.

LED:

Aluminum Metal Core - 2oz Copper Inlay

Wattage:
149 Watt



Driver:

Electronic Driver, 120-277V, 50/60Hz; Less Than 20% THD and PF>0.90. Standard Internal Surge Protection 6kV. 0-10V Dimming Standard for a Dimming Range of 100% to 10%; Dimming Source Current is 150 Microamps.

Controls:

Fixtures Ordered with Factory-Installed Photocell or Motion Sensor Controls are Internally Wired for Switching and/or 1-10V Dimming Within the Housing. Remote Direct Wired Interface of 1-10V Dimming is Not Implied and May Not Be Available, Please Consult Factory. Fixtures are Tested with EnviroLux Controls and May Not Function Properly With Controls Supplied By Others. Fixtures are NOT Designed for Use with Line Voltage Dimmers.

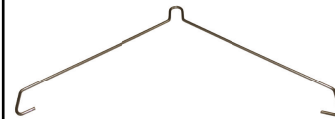
Warranty:

7-Year Warranty for -40°C to +50°C Environment.

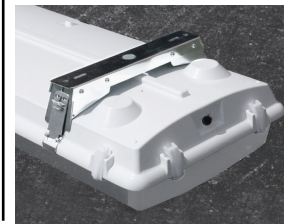
See Page 2 for Projected Lumen Maintenance Table



Dimensions		Widths
Height	5.72"	149W 6.75"
Length	51.81"	



Flexible Ceiling Mount:
EES-VH316 Stainless Steel Ceiling Mount attaches directly to the ceiling.



- 316 Stainless Steel: **EES-BC**
- Easy Snap on Beam Clamp
- Optional mounting systems:
 - Direct to Ceiling
 - Bail for Chain
 - Drilled for Threaded Rod Pendant

Complete Units
Ordering Information
Example: EES-VT-149W-UNV-PS-XXXX

EnviroLux Led High Lumen 149 Watt Industrial linear Vaportight

		U	5K	P	
Model	Wattage	Driver	CCT	Color	Options
EES-VT=Linear LED Vaportight	149=149w	UNV-PS=120-277V	3K=3000K 4K=4100K 5K=5000K	W=White	

<p>NEMA 4X</p> <p>IP65</p> <p>IP66</p> <p>IP67</p> <p>PSI-1500</p> <p>RoHS</p>	<p>SF=Single Fuse DF=Double Fuse SP=Surge Protection 6kv standard, 10kv optional QDP=Quick Disconnect M1=Motion Sensor, IR for mounting heights of 20ft to 35ft M2=Motion Sensor, IR for mounting heights of 18ft or less BB=Battery Backup Unifi=EnviroLux Wireless EMB=Emergency Battery Backup 480V=480 Volt NPTW120=Twist Lock 120V NPTW277=Twist Lock 277V NPTW480=Twist Lock 480V</p>
--	--



Scan to watch our Made in USA video



Photometric Performance

LED Watts	Drive Current (mA)	Input Watts	Optics	Spacing Criteria	5000 CCT 80 CRI	
					Lumens	LPW
LED 149w	1650	149	Wide (100°)	1.16	25,479	190

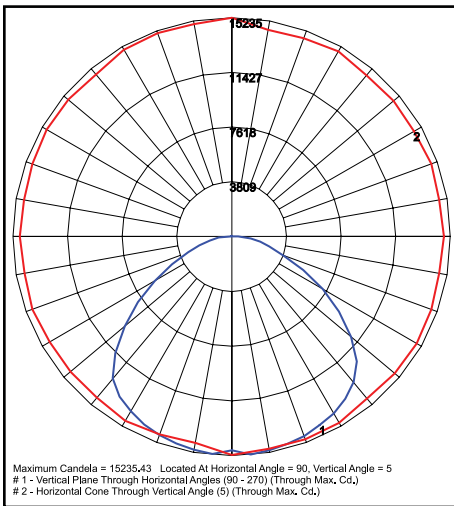
Lumen Maintenance

Data shown for 5000 CCT TM-21-11	Input Watts	Compare to MH				Calculated LED Life
		Initial	25,000 Hrs	50,000 Hrs	100,000 Hrs	
L70 Lumen Maintenance @ 25°C / 77°F	All wattages up to and including 180w	1.00	0.89	0.79	0.58	165,000
L70 Lumen Maintenance @ 50°C / 122°F		1.00	0.86	0.72	0.44	96,000
L80 Lumen Maintenance @ 40°C / 104°F		1.00	0.87	0.74	0.47	74,000

NOTES:

1. Projected per IESNA TM-21-11. Data references the extrapolated performance projections for the base model in a 25°C ambient, based on 10,000 hours of LED testing per IESNA LM-80-08.
2. Compare to MH box indicates suggested Light Loss Factor (LLF) to be used when comparing to Metal Halide (MH) systems.

Photometric Data



- **Optional** 316 Stainless steel latches provide durability and chemical resistance
- Captive design. Will not fly off during maintenance
- 12 latches per unit ensure positive lens retention
- Easily made tamper resistant
- #6 - 3/8" Minimum 1/2" Maximum