

Project Information	
Project Name:	Fixture Type:
Complete Catalog #:	Date:
Comments:	

The EnviroLux 150 Watt High Lumen Circle LED High Bay Fixture product is designed to replace HID lighting systems of up to 400 watt. Typical commercial high bay lighting applications include commercial warehouse facilities, and manufacturing facilities where our high Lumens Per Watt and high CRI, help factory workers best disseminate their production equipment and surroundings for safety.

SPECIFICATIONS AND FEATURES:

HOUSING: Thermally Conductive Polycarbonate Housing. Zinc Plated Driver/ Mounting Yoke. Passive Heat Management.

LENS: Optic 99 Frosted Acrylic Flat Lens to control glare. Lens Ring Kit (with threaded inserts and captive screws). Accommodates Occupancy Sensor.

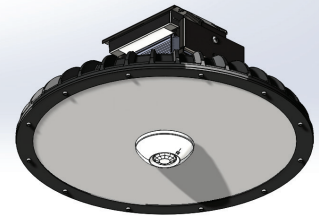
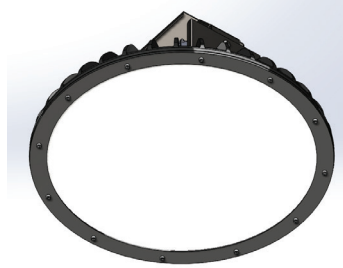
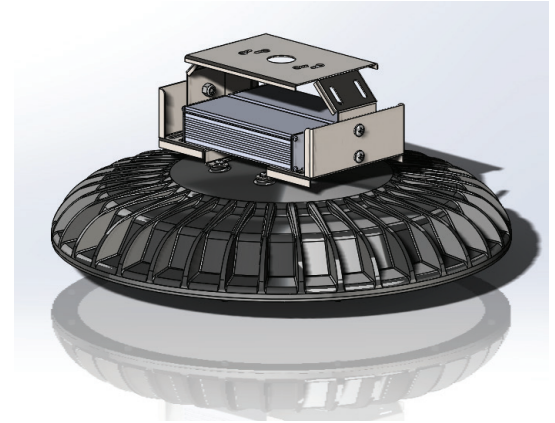
MOUNTING OPTIONS: Pendant, Direct, Trunion and Wall Mount

EnviroLux LED Engine:
182 LPW, >80CRI, Silicone Coated Aluminum Core Boards - Water and Humidity Proof

WATTAGE:
150W=Array: 150 System Watts Lumens: 24,570 (400W HID or Induction Equivalent.)

DRIVER:
Programmable Driver, 120-277V, 50/60Hz; Dimmable Driver.

Listing and RATINGS:
CSA. Operating in Ambient Temperatures: -40°C to + 50°C IP67 Sealed LED Compartment.



Complete Unit Ordering Information Example:
EESHB150W27V50KWLD

EnviroLux 150 Watt Round Industrial High Bay

Scan to watch our Made in USA video



EES		Scan to watch our Made in USA video					
Model	Part Suffix	Driver	Wattage	CCT	Lens Option	Mounting	Options
EES	HB150W27V50KWLD	UNV=120-277V	150	4000 5000			
				C=Clear			
				HCP=Hook-Cord-Plug PND= 3/4 Inch Pendant			
				SF=Single Fuse DF=Double Fuse SP=Surge Protection M1=Motion Sensor, IR for mounting heights of 20ft to 45ft M2=Motion Sensor, IR for mounting heights of 18ft or less 480v=480 Volt			



1304 NE 154th Street, Suite 102 • Vancouver, WA 98685 • Toll-Free: 800-914-8779
For more information, go to www.envirolux.com

Data is based upon tests performed in a controlled environment and representative performance. Actual performance can vary depending on operating conditions. Specifications are subject to change without notice. All specifications are nominal unless otherwise noted.