

Project Information	
Project Name:	Fixture Type:
Complete Catalog #:	Date:
Comments:	

The EnviroLux 77 Watt High Lumen Circle LED High Bay Fixture product is designed to replace HID lighting systems of up to 400 watt. Typical commercial high bay lighting applications include commercial warehouse facilities, and manufacturing facilities where our high Lumens Per Watt and high CRI, help factory workers best disseminate their production equipment and surroundings for safety.

SPECIFICATIONS AND FEATURES:

HOUSING: Thermally Conductive Polycarbonate Housing. Zinc Plated Driver/ Mounting Yoke. Passive Heat Management.

LENS: Optic 99 Frosted Acrylic Flat Lens to control glare. Lens Ring Kit (with threaded inserts and captive screws). Accommodates Occupancy Sensor.

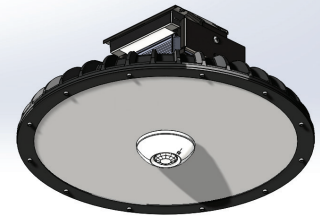
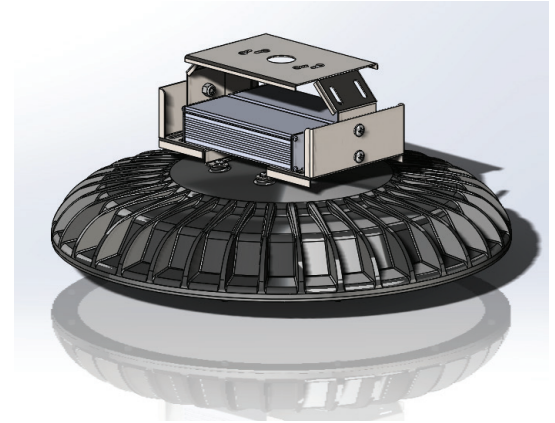
MOUNTING OPTIONS: Pendant, Direct, Trunion and Wall Mount

EnviroLux LED Engine:
201 LPW, 83CRI, Silicone Coated Aluminum Core Boards - Water and Humidity Proof

WATTAGE:
77W=Array: 77 System Watts Lumens: 13.929 (400W HID or Induction Equivalent.)

DRIVER:
Programmable Driver, 120-277V, 50/60Hz; Dimmable Driver.

LISTING & RATINGS:
UL: Listed
Operating Temperatures: -40°C to + 55°C IP65
Sealed LED Compartment.



EnviroLux 77 Watt High Bay



Ordering Information Example:
EESHB77WUNV5000K-C-HCP

Scan to watch our Made in USA video

Model	Wattage	Driver	CCT	Lens Option	Mounting	Options
EESHB	77W	UNV=120-277V 480=480V	3000K 4000K 5000K			
HB77W27V50KWLD			C=Clear			



EnviroLux Unifi Mesh Passport option can operate up to 500 fixtures on a wireless network from anywhere in the world.

HCP=Hook-Cord-Plug
PND= 3/4 Inch Pendant

SF=Single Fuse
DF=Double Fuse
SP=Surge Protection
M1=Motion Sensor, IR for mounting heights of 20ft to 35ft
M2=Motion Sensor, IR for mounting heights of 18ft or less
R3=3-Pin Twist Lock Photocell Receptacle
R7=7-Pin ANSI C136.41—2013 Twist Lock Photocell Receptacle with P18132 shorting cap
480v=480 Volt
UNIFI=EnviroLux UniFi Wireless

