

<b>Project Information</b>	
Project Name:	Fixture Type:
Complete Catalog #:	Date:
Comments:	

The EnviroLux 45 Watt LED Half Moon Wall Pack luminaire is designed to replace HID lighting systems between 100w to 250w MH or HPS. Typical wall mounted lighting applications include retail centers, industrial parks, schools and universities, public transit and airports, office buildings and medical facilities. Mounting heights of 10 to 24 feet can be used based on light level and uniformity requirements.

**SPECIFICATIONS AND FEATURES:**

**HOUSING:**

Die Cast Hinged and Gasketed Aluminum Door Frame and Housing with 1/2" Coin Plugs. Nickel-Plated Stainless Steel Hardware. Photocell Adaptable.

**FINISH:**

Textured Architectural Bronze Powdercoat Finish Over a Chromate Conversion Coating. Custom Colors Available Upon Request.

**LENS:**

Bottom: Tempered Clear Flat Glass Lens,  
Top: Optional Oval Molded Tempered Clear Glass Lens.

**MOUNTING OPTIONS:**

Mount Directly Over a 4" Recessed Outlet Box, Includes Easy-Hang "Two Hands Free" Wall Mounting Bracket with Built-In Level

**EnviroLux LED Engine:**

**201LPW, 83CRI**, Silicone Coated Aluminum Core Boards - Water and Humidity Proof

**WATTAGE:**

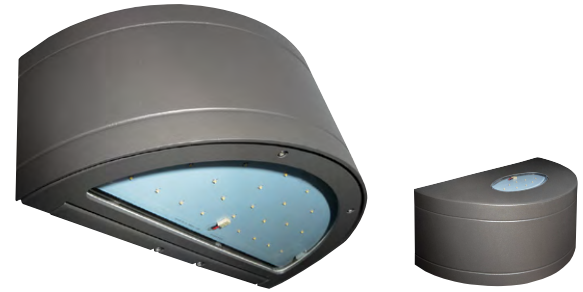
**45W**=Array: 45 System Watts: **Lumens - 8592**  
(100-150W HID or Induction Equivalent.)

**DRIVER:**

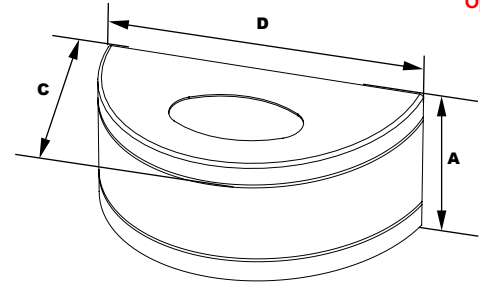
Programmable Driver, 120-277V, 50/60Hz; Dimmable Driver.

**Listing and RATINGS:**

CSA Listed. Operating in Ambient Temperatures:  
-40°C to + 50°C IP67 Sealed LED Compartment.



(Top View - Optional)



**Dimensions**

<b>Width (D)</b>	18 1/8" (460mm)
<b>Depth (C)</b>	7 1/8" (181mm)
<b>Height (A)</b>	9 1/8" (232mm)

**EnviroLux 45 Watt LED Half-Moon Wallpack**

**Ordering Information Example**  
EESWH15-HMWPQF-1x45U-5K-C

Scan to watch our Made in USA video



Model	Part Suffix	Wattage	Driver	CCT	Mounting	Options
EESWH15	HMWPQF	1x45	U=120-277V	<b>3K=3000K (Optional)</b> <b>4K=4000K (Optional)</b> <b>5K=5000K (Standard)</b>  <b>C=Clear</b>	4" Recessed Outlet Box Easy Hang Mounting Bracket	<b>SF</b> =Single Fuse <b>DF</b> =Double Fuse <b>PC</b> =Button Photo Cell 120-277 <b>SP</b> =Surge Protection 6kv standard, 10kv optional <b>M1</b> =Motion Sensor, IR for mounting heights of 20ft to 35ft <b>M2</b> =Motion Sensor, IR for mounting heights of 18ft or less <b>WG</b> =Wire Guard <b>LVG</b> =Lexan Vandal Guard <b>EMB</b> =Emergency Battery Backup <b>UNIFI</b> =Unifi Wireless



EnviroLux Unifi Mesh Passport can operate up to 500 fixtures on a wireless network from anywhere in the world.



## ***EnviroLux Half-Moon Wallpack Options***



***Battery Backup***



***Button Photocell  
(PC1, PC2)***